



Home > Products > Product Page

### AML91LA73

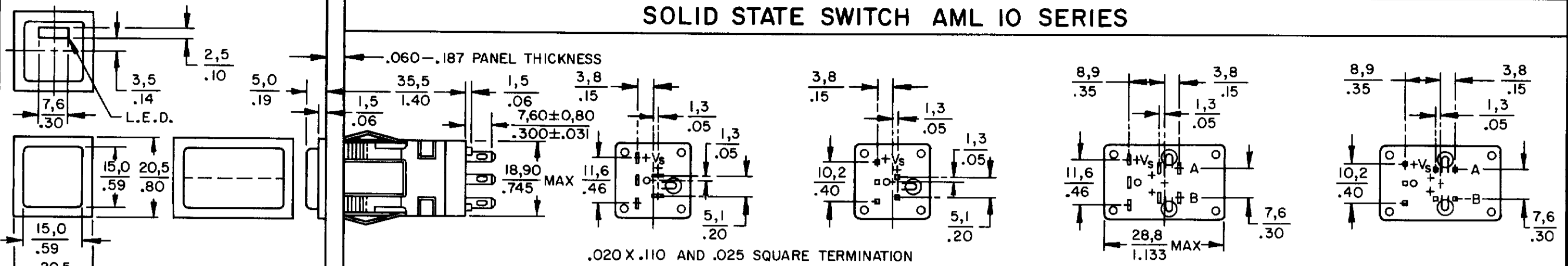


**AML91 Series Incandescent Lamp, 14 Volts**

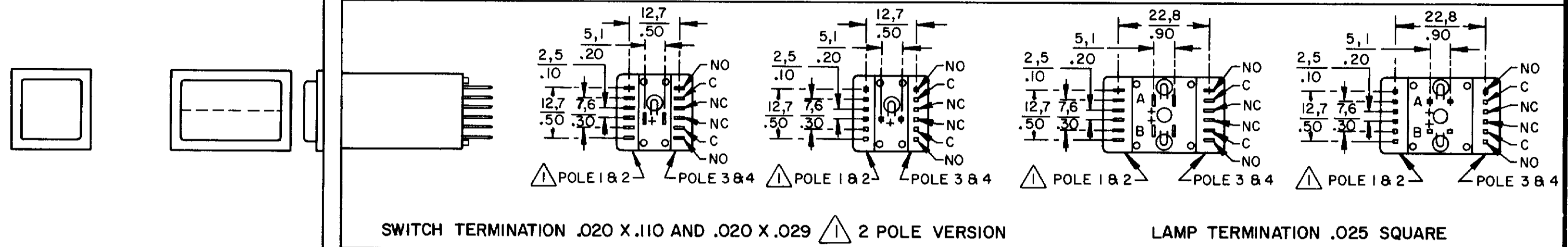
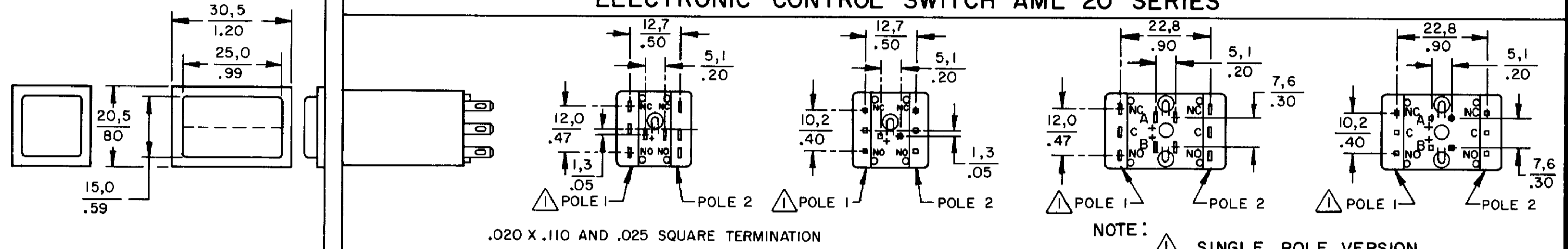
Product Specifications	
Product Type	AML Incandescent lamp
Used With Series	AML11, AML12, AML21, AML22, AML23, AML24, AML27, AML31, AML32, AML33, AML34, AML35, AML36, AML41, AML42, AML45
Voltage	14
Availability	Global

# AML PUSHBUTTON AND INDICATOR SERIES

## SOLID STATE SWITCH AML 10 SERIES

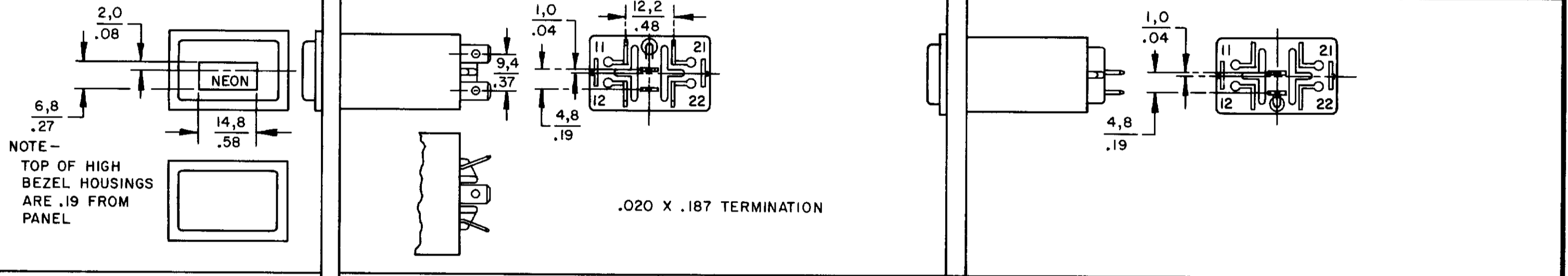


## ELECTRONIC CONTROL SWITCH AML 20 SERIES

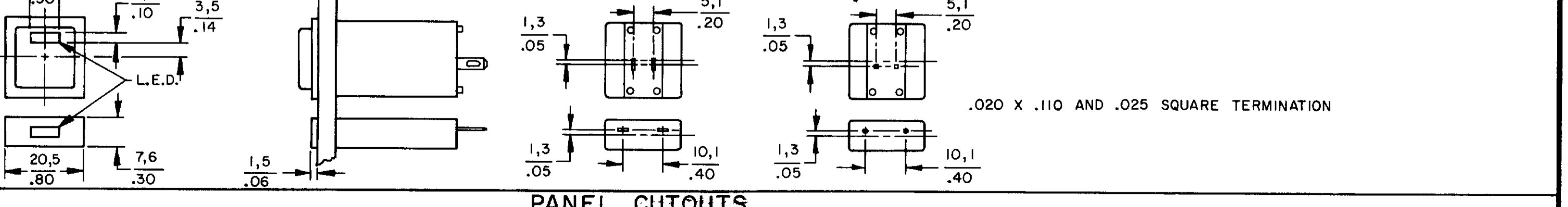
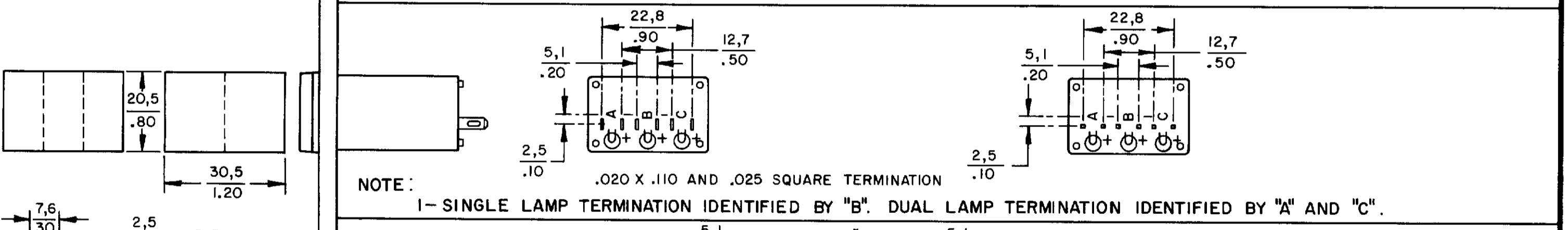
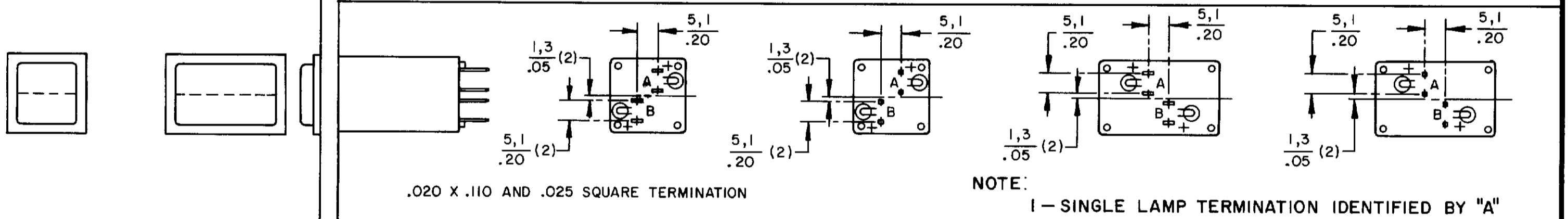


## POWER SWITCH AML 30 SERIES

## LINE POWER IND AML 43 SERIES



## INDICATORS AML 40 SERIES

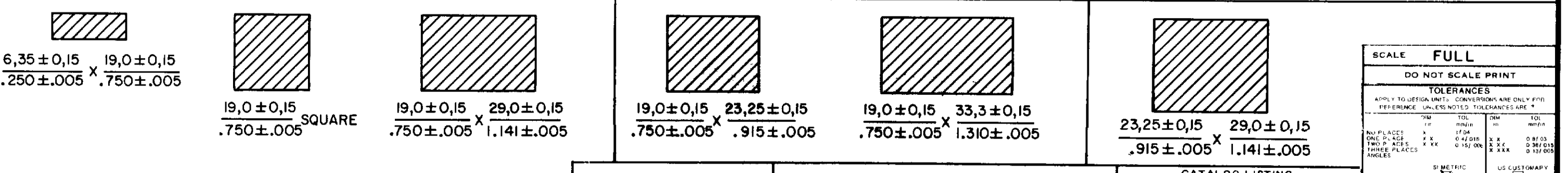


## PANEL CUTOUTS

### WITHOUT BARRIERS

### SHORT BARRIER

### LONG BARRIER



SCALE FULL	
DO NOT SCALE PRINT	
TOLERANCES	
APPLY TO DESIGN UNITS. CONVERSIONS ARE ONLY FOR REFERENCE. UNLESS NOTED, TOLERANCES ARE:	
INCHES	FRACTIONS
NO PLACES	± .005
ONE PLACE	± .001
TWO PLACES	± .0005
THREE PLACES	± .0002
ANGLES	± .001
DESIGN UNITS	DI METRIC <input checked="" type="checkbox"/> US CUSTOMARY <input type="checkbox"/>
THIRD ANGLE PROJECTION	
WEIGHT	

CATALOG LISTING AML 10 20 30 40  
 PAGE 1 OF 1 SERIES CHART 1  
 RELEASE NO. CO-78498 REPLACES CO-78498 & 40 SERIES  
 ISSUE 6  
 REVISIONS:  
 A 209297 6 J W 8 JUL 89  
 B 201477 6 J W 9 OCT 00  
 C 201566 C S L 20 OCT 00  
 D 201696 D J V 00  
 E 202971 C S L 30 APR 01  
 DRAWN JAK 17 JUN 94 CHECK JAF 11 JUL 04  
 RASTER